

# T40 Sectional Door

## INSULATED SECTIONAL DOOR



This door system combines excellent sound and thermal insulation properties, with clean, modern designed 40mm micro-profiled panels. Application options are almost limitless due to the extensive range of colours, vision options and unique hardware configurations available, making it ideal for a wide variety of projects.

### Energy Saving

The thermal performance of this door is ensured, thanks to the quality PU high-density panel core complemented by robust full perimeter seals. A U-value of 1.55W/m<sup>2</sup>K ensures energy management in moderately controlled environments, whether cooled or heated.

### Sound Insulation

The T40 door system is certified for world class performance. Tested by TÜV Nord, airborne sound reduction acc. to EN717-1 is 24dB which means it can be applied to any project requiring effective sound reduction.

### Ideal for use in

- Warehouses
- Distribution centres
- Manufacturing facilities
- Logistics companies
- Heavy-use environments
- Industrial facilities
- Convention centres
- Airports or Military

### Architectural Applications

Exterior of panels has a micro-line profiling and a polyester coating available in multiple colour selections. This can be complemented by various window sizes. Either one or more panels can be replaced with anodised aluminium profiles which allows multiple glazing options.

### Safety First

Next level in quality, it is built to exceed AS/NZS standards meaning you can trust the T40 door system to protect your people at all times, and be assured of long-term reliability. The door hardware systems include multiple safety enhancements that have been stress tested and are tried and proven globally.

### Configurability

The T40 offers a high level of customisation, to ensure the door can be correctly adapted to optimise design and function. Multiple automation and safety systems are available including high speed operation. It can also be fitted with a Personnel Door within it, to allow personnel entry/exit without opening the complete door. This flexibility ensures you receive what you need.



## STANDARD COMPLIANCE

Air Permeability	Class 3	Water Permeability	Class 2
Wind Loading	Class 3	Acoustic Performance	24dB
Thermal Transmittance	1.55 W/m²K	Safe Openings	Yes

## TECHNICAL SPECIFICATIONS

Application	Internal/External
Standard Size	3100mm W x 3600mm H
Minimum Size	1800mm W x 1800mm H
Maximum Size	8000mm W x 6500mm H (max 42m²)
Opening Speed	Up to 400mm/sec - variable
Closing Speed	Up to 400mm/sec - variable
Operating Temperature	0°C to +35°C (20° Max Temperature Differential)

## TRACK SYSTEM

Material	Galvanised Steel
System	Vertical Lift - Low Shaft (Max Door Size 15m²)

## PANELS

Material	40mm panels with micro-profile exterior
Colour	RAL9002 (standard)
Vision Windows	1 Row, Rectangular, Double Glazed Acrylic (680mm W x 373mm H)

## MOTORISATION

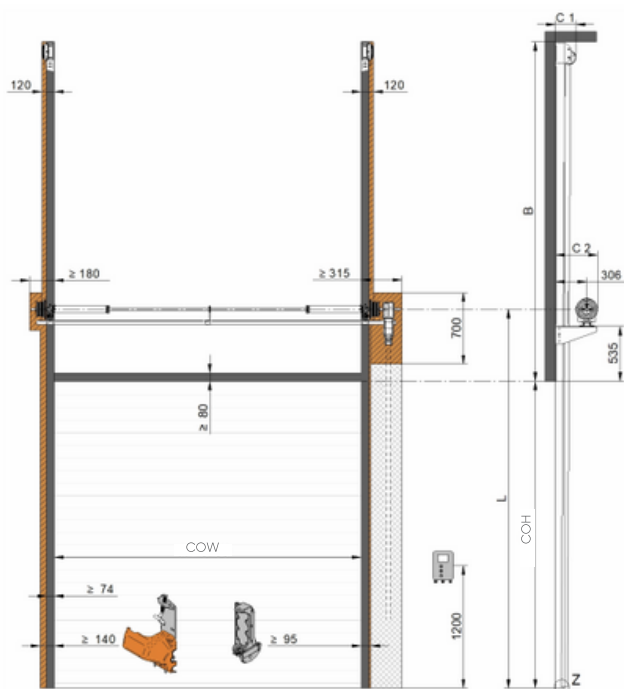
Motor	1.5kW Motor
Motor Position	RH Side
Control Panel	IP54 rated Control box with inverter frequency controller - RH mounted
Power Supply	230V; 1 phase +N+E; 10Amp Rated; adjacent to control box installed to right hand side

## SPACE REQUIREMENTS

### minimum clearances

Headroom	COH + 550mm
Sideroom	365mm (motor side) 230mm (non-motor side)

## DIMENSIONS



FRONT & SIDE ELEVATION VIEW

## SAFETY

Standard Inclusions	Opto-sensor safety edge system Spring break safety device
Manual Opening	Manual Hand Chain

## ACTIVATIONS

Manual	Push button fitted to control box: Up-Stop-Down
--------	---

## STANDARD INCLUSIONS

Double EPDM Rubber Door Seals at top and bottom  
25,000 cycle rated Springs  
Thermally insulated plastic seals between all metal surfaces  
Wind and waterproof connections between panel sections  
Performance rated to 100,000 cycles

## WARRANTY

12 Months or 10,000 Cycles  
\*Std Warranty terms and conditions apply

## OPTIONAL FEATURES

Activations	All Ulti Activation options can be applied
Power Supply	400V 3 phase +N+E; 16Amp (isolator required adjacent to control box, by others)
Mounting Options	LH Power Supply, LH Control Box, LH Motor, Custom Control Box Position
Track System	Stainless Steel
Panel Colour (Exterior)	RAL9006, Custom RAL on request
Vision Windows	1, 2, or 3 rows, custom rows and/or number of windows
Alternative Vision Window Glazing	Oval Double glazed, 663mm W x 343mm H Low window, 609mm W x 146mm H Round Stainless Steel Window, 330mm D Square Stainless Steel Window, 310mm Rectangular Stainless Steel Window, 980mm x 140mm
Full Width Glazing (in lieu of Insulated Panel)	Aluminium frames to be colour matched to insulated panels Double glazing, Acrylic Double glazing, scratch resistant PRO-TEC Double glazing - Smoke, Opaque, Pinpoint Double glazing, 21mm safety glass Single glazing, Acrylic Single glazing, scratch resistant PRO-TEC Single glazing - Smoke, Opaque, Pinpoint Single glazing, 4mm safety glass
Ventilated Panels	Closable ventilation grille, white or black, 344mm W x 138mm H Anodised Perforated plate, full width panel Aluminium Diamond mesh, full width panel
Springs	50,000 or 100,000 cycle rated springs
Safety	2000mm Light Curtain Sensors 1 set of Infrared Photocell Safety beams LED traffic lights pair (red/green) Shootbolt with Microswitch sensor
Emergency Egress	UPS Battery backup (Single Phase)
Optional Selections	Track Thermal Isolation Package Personnel Door within door leaf

## ALTERNATIVE TRACK SYSTEMS

### configured to suit available headroom

Standard Lift	Headroom = 510mm, Depth = COH + 1000mm. Max 42m²
High Lift	Lift = Headroom - 290mm, Max 42m²
Vertical Lift (High Shaft)	Headroom = COH + 420 mm, Max 42m²
Low Clearance	Headroom = 200mm (Max 25m²) 250mm (Max 40m²), 320mm (Max 20m²)
Roof Angle Tracks	Standard = 5-44°, High = 1-44°, Low = 1-35°

